



On to a Strong Start!

MOE Kindergarten - Early Years Centre
Collaboration



MOE Kindergarten (MK) is collaborating with two Anchor Operators - PAP Community Foundation Sparkletots Preschool (PCF Sparkletots Preschool) and NTUC First Campus' My First Skool - to provide a continuum of quality and affordable pre-school education for children aged two months to six years.



Collaboration with PCF Sparkletots Preschool and My First Skool

Under this collaboration, partners PCF Sparkletots Preschool and NTUC First Campus' My First Skool operate Early Years Centres (EYCs) providing preschool services for children aged two months to four years. At age 5, the children will then have a choice to continue their Kindergarten 1 (K1) and Kindergarten 2 (K2) programme at a partner MOE Kindergarten.

This preschool service model will help to increase the number of government-supported preschool places to meet the needs of families with young children.

For more information on each of our partners, please visit their websites:

**PCF Sparkletots
Preschool**



www.pcf.org.sg/sparkletots

**NTUC First Campus'
My First Skool**



www.myfirstskool.com



About MOE Kindergarten

MOE Kindergarten (MK) aims to provide a strong start for every child.

Children are nurtured holistically so that they are confident, demonstrate strong social skills and have a good foundation in literacy and numeracy.





MK offers a four-hour programme for K1 and K2 children aged five and six years old respectively.






Children will embark on an exciting learning journey through two flagship programmes, the **Hi-Light Programme** and **Starlight Literacy Programme for English and Mother Tongue Language**. These are designed based on the beliefs and principles in MOE's Nurturing Early Learners Framework.

These programmes focus on the holistic development of children and seek to ignite the joy of learning in them. MK's emphasis on nurturing early childhood bilingualism, values, social and emotional skills and learning dispositions for children's future language and lifelong learning.

To deepen children's learning, each term culminates in a **Weeks of Wonder (WoW) project** in which children work together with their friends and teachers to investigate topics of their interest. Through the WoW projects, children experience the joy of self-motivated learning and find answers to their questions.



Why choose MK?

-  Quality and Affordable Kindergarten Education
-  Caring and Skilful Educators
-  Spacious and Rich Learning Environment
-  Holistic Curriculum in English and 3 Mother Tongue Languages
-  Smooth Transition to Primary School



Parents who require a full-day service for their child can opt for **Kindergarten Care (KCare)**, which provides the time and space for children to play, explore and discover in a conducive environment. Located within the same premises as the MK, KCare is provided by MOE-appointed service providers and based on MOE guidelines.



For more information about the MOE Kindergarten (MK) programmes, curriculum and fees, visit www.go.gov.sg/mkeyc1.

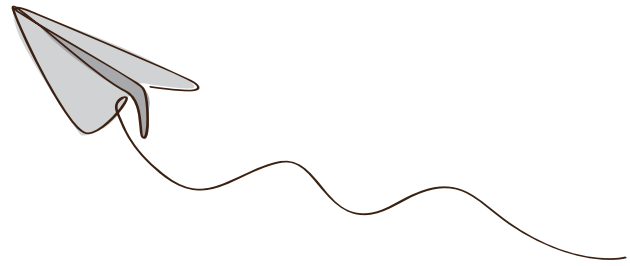


Find out the partner Early Years Centres (EYCs) of your preferred MKs by checking out our **SchoolFinder!**

<https://go.gov.sg/mkeyschoolfinder>



Admission to MOE Kindergarten



All Singapore Citizen and Singapore Permanent Resident Nursery 2 (N2) children enrolled in a partner EYC and who meet a set of eligibility criteria* will be offered a K1 place in a partner MK.

Children will be enrolled in the partner^ MK through a Registration Exercise conducted in February during his or her N2 year. You will receive an MK registration notification letter through the EYC that your child is enrolled in. More information on the registration process will be provided in the notification letter.

Your permission will be sought for the sharing of your child's data between PCF Sparkletots Preschool or NTUC First Campus' My First Skool and MK to facilitate his or her enrolment in the partner MK. We appreciate your assistance to update your child's data with PCF Sparkletots Preschool or NTUC First Campus' My First Skool as and when there are any changes, so that the centre has accurate information about your child.

*N2 children must be enrolled in their EYC by 31 January of their N2 year. Please approach your EYC for details.

^If you decide to apply to other non-partner MKs instead, your child will not be guaranteed a K1 place at the non-partner MKs. Your application to the non-partner MKs will be considered under the Open Admissions (i.e. non-EYC) registration and subject to the same conditions as all other Open Admissions applications.



Overview of Admissions Process



MOE Kindergarten Open House

(February)*

Visit the MK Open House to find out more about the MK curriculum, programmes and learning environment.



Registration Exercise

(February)*

You will receive an MK registration notification letter through the EYC, where your child is enrolled in. To register your child in a partner MK, you can refer to the instructions indicated in the notification letter to submit your application online by the stipulated deadline.



Notification of Placement Outcome

(March)*

You will receive an outcome from MOE via email to accept the offer of a place in the partner MK and the session that your child has been placed in. You should accept the offer by the stipulated deadline, after which the offer will lapse.

*More information on the registration process and timeline will be available on the MK website (www.moe.gov.sg/mk-register) closer to the registration period. If your child is enrolled in an EYC that commences operations after 31 January, the registration timeline will be different from the above. Please approach your EYC for details.

Session Allocation

If your child is enrolling for the full-day MK and KCare programme, he or she will be allocated either a morning or afternoon MK session as your child will be with the MK for the whole day.



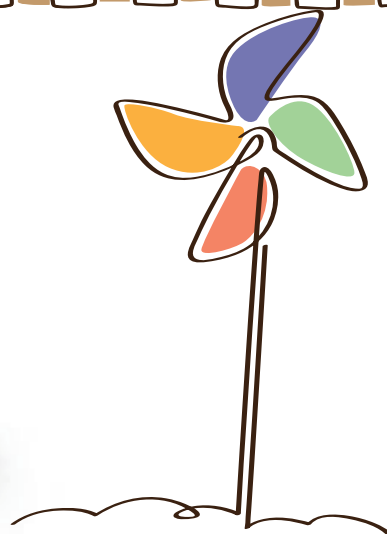
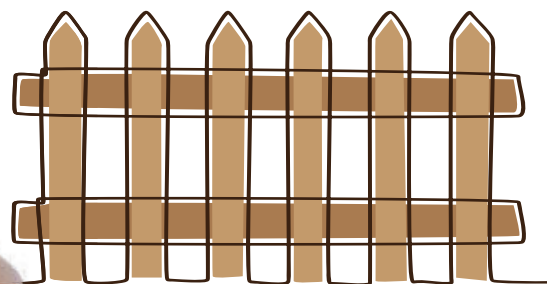
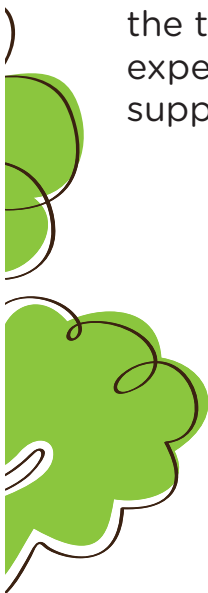
If your child is enrolling for the MK programme only and your preferred session is unavailable, he or she will be allocated to an alternate session.



A Smooth Transition to MOE Kindergarten

You and your child will be invited to an orientation session at the partner MK before the start of the K1 year. At the orientation, you and your child will have the opportunity to meet your child's kindergarten teachers and friends. This session will be helpful in inducting your child to the new learning environment.

For the first day of Term 1, you are also welcome to accompany* your child to the MK. We encourage you to spend the first day with your child, so that you can help him or her through the routines in the MK. You can also take the opportunity to highlight your child's habits to the teachers. Teachers at the MK will keep a look out for children who experience adjustment challenges and work together with parents to support the child's transition to the new learning environment.



*Please refer to the kindergarten's arrangements and guidelines.



For more information:
6872 2220
www.moe.gov.sg/mk

