



**JUNYUAN PRIMARY SCHOOL**

Future-Ready Learners . Leaders of Character

# **P5 Curriculum Briefing**

18 Jan 2024, 2.30 pm



**JUNYUAN PRIMARY SCHOOL**

Future-Ready Learners . Leaders of Character

# Vision

**Future-Ready Learners  
Leaders of Character**



**JUNYUAN PRIMARY SCHOOL**

Future-Ready Learners . Leaders of Character

# Mission

**Nurturing Every Child  
in a  
Vibrant and Caring Environment  
where  
Talents Blossom**

Nurturing Every Child in a Vibrant and Caring Environment where Talents Blossom



## JUNYUAN Primary School

### Vision

Future-Ready Learners, Leaders of Character

### Mission

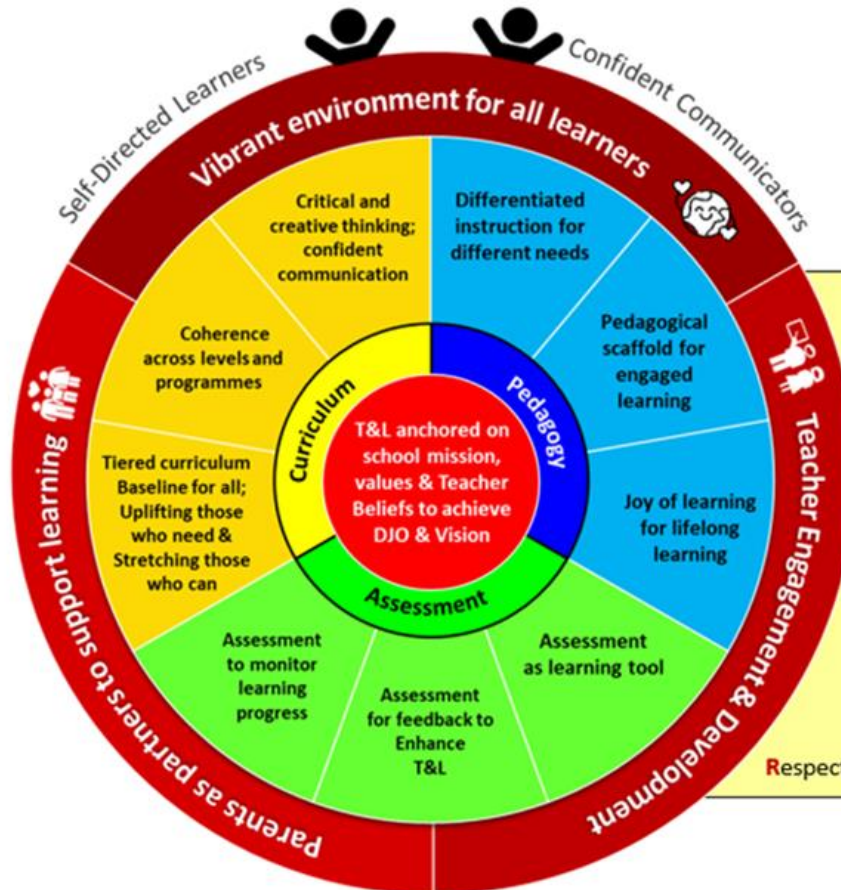
Nurturing Every Child in a  
Vibrant and Caring Environment  
where Talents Blossom

### Desired Junyuan Outcomes (DJOs)

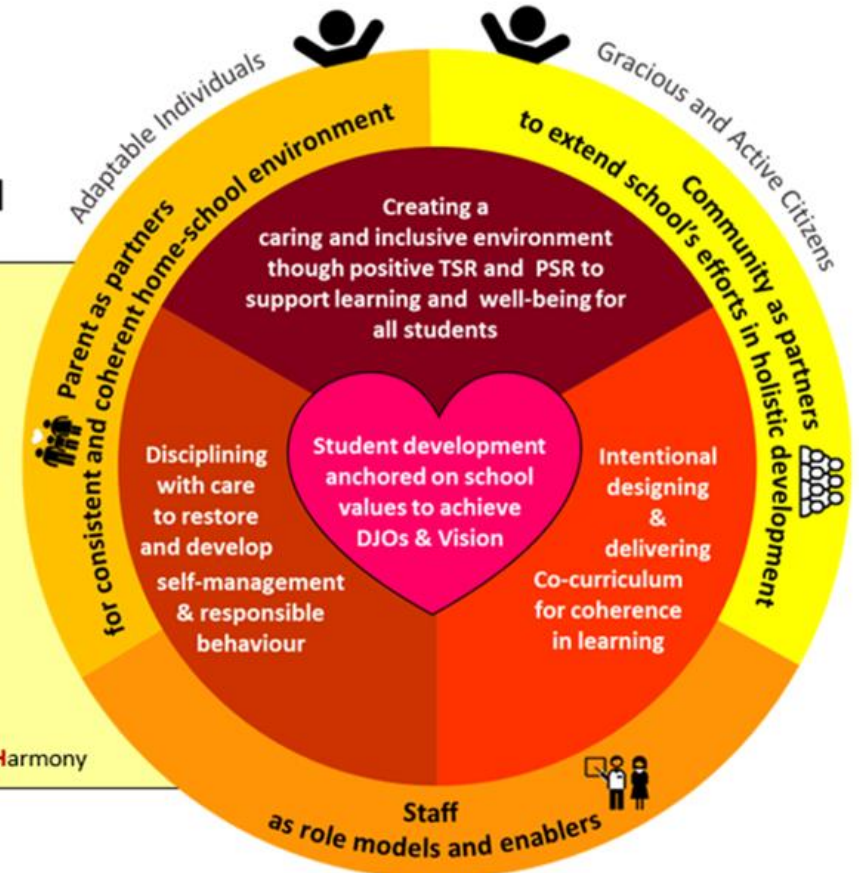
Self-Directed Learners  
Confident Communicators  
Adaptable Individuals  
Gracious and Active Citizens

### School Values (R<sup>3</sup> ICH)

Respect . Responsibility . Resilience . Integrity . Care . Harmony



JYPS IP Curriculum Framework



JYPS SDT Framework



# Desired Junyuan Outcomes

1. Self-Directed Learners
2. Confident Communicators
3. Adaptable Individuals
4. Gracious and Active Citizens





# Values

**Respect**

**Responsibility**

**Resilience**

**Integrity**

**Care**

**Harmony**

**R<sup>3</sup>ICH**

TERM 1 WEEK 1

06 Thursday 36.5°C

Activity/Page	Check	Teacher's/ Parent's Remarks
1. Show my Parent Dejo form.	<input checked="" type="checkbox"/>	
2. Paste timetable on page 167.	<input checked="" type="checkbox"/>	
	<input type="checkbox"/>	
	<input type="checkbox"/>	

07 Friday 36.4°C

Activity/Page	Check	Teacher's/ Parent's Remarks
1. Sign student diary page 20.	<input checked="" type="checkbox"/>	
2. Complete ISDR and pgp forms.	<input checked="" type="checkbox"/>	
3. Complete GLS lesson.	<input checked="" type="checkbox"/>	
4. Bring colour pencils.	<input checked="" type="checkbox"/>	

My Reflections



**JUNYUAN PRIMARY SCHOOL**

Future-Ready Learners . Leaders of Character



## **Direct School Admission for Secondary Schools (DSA-Sec)**



# Entering a Secondary School



## PSLE/S1 Posting Process

- Based on a student's **PSLE score**
- **Most students enter secondary schools this way**



## DSA-Sec

- Based on a diverse range of **talents and achievements in specific academic subjects or non-academic areas, beyond what the PSLE recognises**
- Allows students to **access school programmes to develop their talents**





# The PSLE changes are Part of a bigger story

Over the years, we have been fine-tuning the education system to help our students discover and develop their strengths and interests, while moving away from an over-emphasis on academic results.

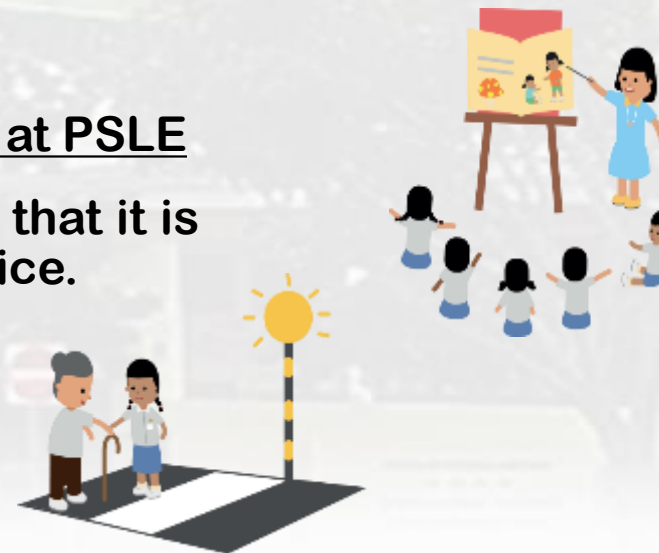
Our PSLE scoring changes aim to:

- Reduce fine differentiation at a young age
- Recognise students' level of achievement, regardless of how their peers have done

The changes will not affect the curriculum and subjects tested at PSLE

However, MOE does review the curriculum regularly to ensure that it is relevant and up-to-date. This will continue as per current practice.

PSLE Microsite

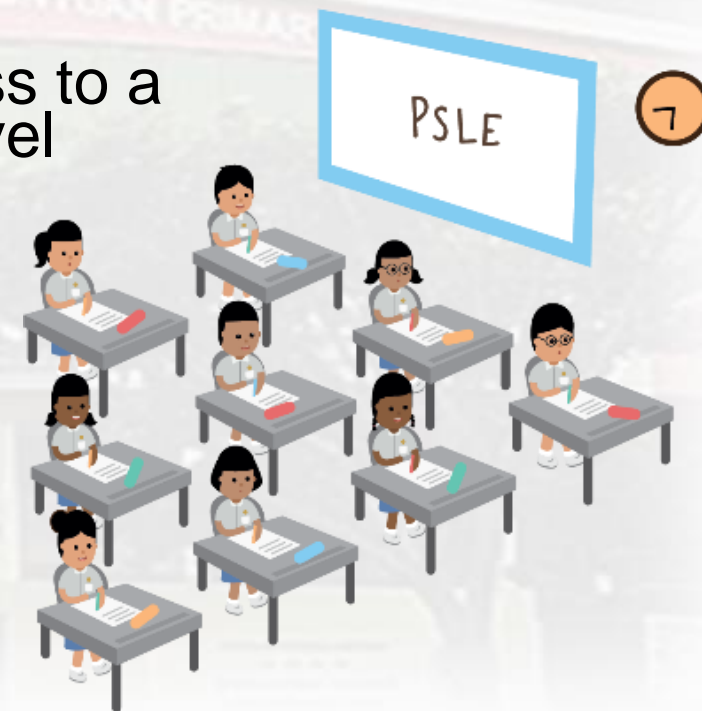




# The PSLE remains a useful checkpoint

To understand where our children are at in their learning after six years of primary school

Gauge their learning needs so that they can progress to a secondary school and take subjects at a suitable level





# PSLE Scoring

## Reflects a student's individual level of achievement

Unlike the current T-score, students' AL for each subject will reflect their level of achievement, rather than how they have performed relative to their peers.

AL	RAW MARK RANGE
1	$\geq 90$
2	85 – 89
3	80 – 84
4	75 – 79
5	65 – 74
6	45 – 64
7	20 – 44
8	$< 20$

Foundation Level AL Reflected on Result Slip	Foundation Raw Mark Range
A (AL6)	75 – 100
B (AL7)	30 – 74
C (AL8)	$< 30$



# Calculating the PSLE Score

- The PSLE Score replaces the T-score aggregate.
- It is obtained by adding the ALs of four subjects.
- The PSLE Score ranges from 4 to 32, with 4 being the best.



ENGLISH	AL3
MOTHER TONGUE	AL2
MATHEMATICS	AL1
SCIENCE	AL2

**PSLE SCORE: 8**

Posting Groups	PSLE SCORE
G3 EXPRESS	4 – 20
G3 or G2 EXPRESS / N(A)	21 – 22
G2 N(A)	23 – 24
G2 or G1 N(A) / N(T) option	25
G1 N(T)	26 – 30, with AL7 or better in both EL and MA





# Calculating the PSLE Score

- The PSLE Score replaces the T-score aggregate.
- It is obtained by adding the ALs of four subjects.
- The PSLE Score ranges from 4 to 32, with 4 being the best.



ENGLISH AL3

FOUNDATION  
MOTHER TONGUE ALB

FOUNDATION  
MATHEMATICS ALB

SCIENCE AL5

---

**PSLE SCORE: 22**

Posting Groups	PSLE SCORE
G3 EXPRESS	4 – 20
G3 or G2 EXPRESS / N(A)	21 – 22
G2 N(A)	23 – 24
G2 or G1 N(A) / N(T) option	25
G1 N(T)	26 – 30, with AL7 or better in both EL <u>and</u> MA



# Scoring for MTL-exempt and AsL/FL\* students

For students who are exempted from MTL or take an AsL/FL in lieu of an official MTL, their PSLE result slip will only reflect the three subjects they have taken.

However, for the purposes of Secondary 1 posting, these students will need an assigned MTL score so that they have a PSLE score comprising four subjects

- To determine the assigned MTL score, reference is made to MTL scores of other students who have achieved similar scores in English, Mathematics, and Science.
- This is the same approach taken in the T-score system.

*\*Asian language/ foreign language*



# Scoring for MTL-exempt and AsL/FL students

In reviewing the score assignment for these students under the new PSLE scoring system, we needed to strike a balance between:

- Acknowledging that students have valid reasons for seeking MTL exemption or taking an AsL/FL, and
- Ensuring some parity between scoring for exemption, Foundation and Standard MTL.



# Scoring for MTL-exempt and AsL/FL students

**Under the new scoring system, the assigned MTL score will :**

- ❑ **Take reference from peers with similar scores for English, Mathematics and Science;**
- ❑ **While maintaining parity of treatment with students who take Foundation MTL (who will score between AL 6 to 8).**

**Hence, students will receive an assigned MTL score between AL 6 to 8 in PSLE.**





# Partnership with Parents

Partnering Parents to provide a supportive and nurturing home-school environment for the children to grow and glow.

## A Sample of an "After School Schedule in a day"

Time	Mon
3 p.m.	Complete my homework
4 p.m.	Water break
4.15 p.m.	Revise my work
5 p.m.	Exercise
5.30 p.m.	Me Time
6.30 p.m.	Dinner
7.30 p.m.	Time with family
8.30 p.m.	Reading
9.00 p.m.	Washing up/ Bed Time



# Monitoring your child's online activity

- 1 **Cyberbullying.** Most kids who are harassed online by cyberbullies suffer emotional distress but never tell their parents. Monitoring can alert you if someone may be bullying your child – or if your child has been bullying someone else.
- 2 **Sexting.** Teens might think it's sexy to take and send nude pictures of themselves to someone else, or they might think it's funny to forward along pictures of someone else. Monitoring lets you step in and stop the behavior.
- 3 **Online Predators.** The Internet is the #1 tool of child predators for finding and developing friendships with children. You won't know if one has been talking to your child unless you're watching.
- 4 **Alerts you to cyberbullying and other dangers activities.** If your child is chatting with friends about illegal activities, suspicious behavior or maybe even committing suicide, you will have the chance to intervene before anything actually happens.

Source: <https://resources.uknowkids.com/blog/bid/159115/10-reasons-to-monitor-your-child-s-internet-activity>



# Educating Students on Cyber Wellness

Lessons on Cyber Wellness (CW) have been incorporated in Form Teacher Guidance Period (FTGP) to address specific issues, reinforce the core values and social emotional competencies to enable your child/ward to apply them to specific contexts.

Topics covered in the Cyber Wellness lessons include:

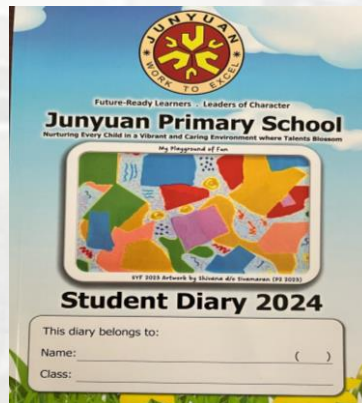
- Cyber Use
- Cyber Identity
- Cyber Relationships
- Cyber Citizenship
- Cyber Ethics



# Partnership with Parents

Communications with parents:

- JYPS Bulletin for Parents (School Website)
- Parents Gateway (MOE App)
- Student Diary
- Parent-Teacher Meeting / Briefing
- Class DOJO
- Emails (school/teachers)
- Phone calls (parents can call GO to leave a message for the teachers)



*We seek your understanding that teachers will respond to your emails and phone calls between 7.30am to 5pm on Mon to Fri during School Term Time*





**JUNYUAN PRIMARY SCHOOL**

Future-Ready Learners . Leaders of Character

*Thank You*