



P6 Curriculum Briefing

18 January 2023





2023 Curriculum Briefing

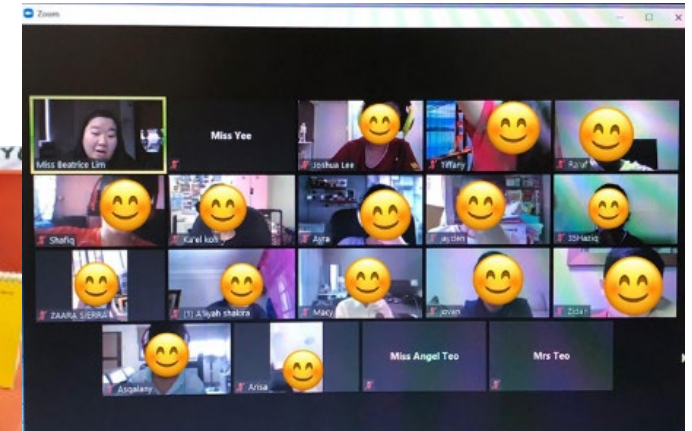
Mission

Nurturing Every Child in a Vibrant and Caring Environment where Talents Blossom



Vision

**Future-Ready Learners,
Leaders of Character**





Direct School Admission for Secondary Schools (DSA-Sec)



Pictures taken pre-COVID-19



Entering a Secondary School



PSLE/S1 Posting Process

- Based on a student's **PSLE score**
- **Most students enter secondary schools this way**

Pictures taken pre-COVID-19



DSA-Sec

- Based on a diverse range of talents and achievements in specific academic subjects or non-academic areas, beyond what the PSLE recognises
- Allows students to access school programmes to develop their talents



Is DSA-Sec Right for my Child?

If your child has specific talents which a school offers the DSA-Sec in

And is passionate about and committed to developing his/her strengths and interests

DSA-Sec can support his/her development in that talent area.

Your child can apply for DSA even if he/she is not in the CCA that is applied for .



Which School should my Child Apply to?

- Look for schools with **programmes that match your child's strengths and interests**
- Learn more about the secondary schools' ***pace of learning*** and ***overall range of programmes***
- **Get the latest information** about what each school offers:
 - Visiting schools' websites
 - Attending schools' Open Houses to experience their environments and cultures



DSA-Sec Application Portal

- Since 2019 DSA-Sec application process has been simplified
- Application for DSA is done through a centralised **DSA-Sec Application Portal**, using a common application form.
- The portal simplifies and streamlines the DSA application process, making it convenient for all students.



What is the timeline for 2023 DSA-Sec?

Apply for DSA-Sec through **DSA-Sec Application Portal.**

June - August

Early May – June
(4 weeks)

Shortlisting and selection by secondary schools. Each secondary school has different selection criteria for its categories and programmes. Schools will inform you of the selection outcome **by Sept.**

Rank your offers, if you receive offers from multiple schools

Late-October

Late-November

You will know whether you have been allocated to a school through the DSA-Sec, at the same time you receive your PSLE results.



Application through the DSA-Sec Portal

1. Centralised online applications

- Applications will be centralised across all participating secondary schools
- The form will be **easy to fill** – child only has to key in contact details and the school and talent choices

Optional: The portal will also allow you to indicate any non-school-based achievements and activities related to the talent areas you applied for.

- **Do not need to submit testimonials or hardcopy documents** to the secondary school during application.



Application through the DSA-Sec Portal

2. Application using Singpass

- Parents can access the Portal via their SingPass login.
Only one parent's SingPass login is required.

3. No application fees

- No fees charged for DSA-Sec application and selection.
- We encourage all students who are passionate about and committed to developing particular talents to apply, regardless of family backgrounds.



Application through the DSA-Sec Portal

4. Making choices in the DSA-Sec portal

- Through the portal, you can easily identify schools that offer programmes for your child's talent area.
- You can indicate up to three choices. For each choice, you will need to choose a secondary school and a talent area from that school.
- The order of the choices does not matter during application.



Application through the DSA-Sec Portal

4. Making choices in the DSA-Sec portal

- Of the three choices, up to two choices may be used to apply to the same school, for two different talent areas of that school. This is to cater to your child's multiple interests, and allow your child to choose different schools which can develop his/her strengths and interests.



Application through the DSA-Sec Portal

4. Making choices in the DSA-Sec portal

- You and your child are encouraged to ***consider your choices carefully***, and manage the time and effort participating in multiple trials and interviews.

Note. Students can apply separately to School of the Arts and Singapore Sports School, on top of the DSA-Sec choices made through the DSA-Sec Portal.



Examples of Possible Choice Combinations

EXAMPLE 1	Talent(s)	School(s)	Your child can apply to <u>up to three different schools</u> , with no restrictions on the talent areas.
	Choir	School A	
	Choir	School B	
	Choir	School C	



Examples of Possible Choice Combinations

EXAMPLE 2	Talent(s)	School(s)	If your child chooses two areas in one school, he/she can apply to two different schools only ,
	Choir	School A	
	String Orchestra	School A	
	Choir	School B	



Examples of Possible Choice Combinations

EXAMPLE 1	Talent(s)	School(s)	If a school of choice is a dual track school, indicate a preference for one of the programmes or no preference
	Choir	School A	
	Choir	School B	
	Choir	School C *	

** School C is a dual-track school offering the O-Level and Integrated Programme.*



What are Secondary Schools Looking for?

- Schools have updated their selection practices, which are based on a common set of student-centric principles, with more emphasis on looking for sound fundamentals and potential in particular talent areas.
- The DSA-Sec selection process remains objective and talent-specific.
- Schools have different selection processes, criteria and schedules. Visit the schools' websites to learn more.



What are the possible DSA-Sec outcomes?

- **Confirmed Offer (CO)** → Your child has a place reserved in the school, as long as his/her PSLE results qualify him/her for a course the school offers (i.e. Express, Normal (Academic) or Normal (Technical)).
- **Wait List (WL)** → Your child will be given a place in the school if other students with Confirmed Offers do not take up those offers, and if his/her PSLE results qualify him/her for a course the school offers. Allocation will be based on students' rank on the school's Wait List.
- **Unsuccessful** Your child has not been given a place in the school. If your child still wishes to enter the schools he/she applied for, he/she can apply through the S1 Posting process using his/her PSLE results



Selecting preferred schools?

- Students with a confirmed offer or on a wait list will receive the DSA-Sec School Preference Form from their primary schools. The form will include instructions on how to submit your child's preferences.
- Use the School Preference Form as a template to help you prepare the relevant information together with your child before starting the online submission. You can list a maximum of 3 schools in order of preference



If my child have a DSA-Sec Confirmed Offer, does it mean that his/her PSLE results will not matter?

- Your child's PSLE results will still be **used to determine the secondary school course he/she is eligible** for (i.e. Express, Normal (Academic), Normal (Technical))
- Even if he/she has a Confirmed Offer, he/she **must qualify for a course offered by the school** to be admitted to the DSA-Sec school.



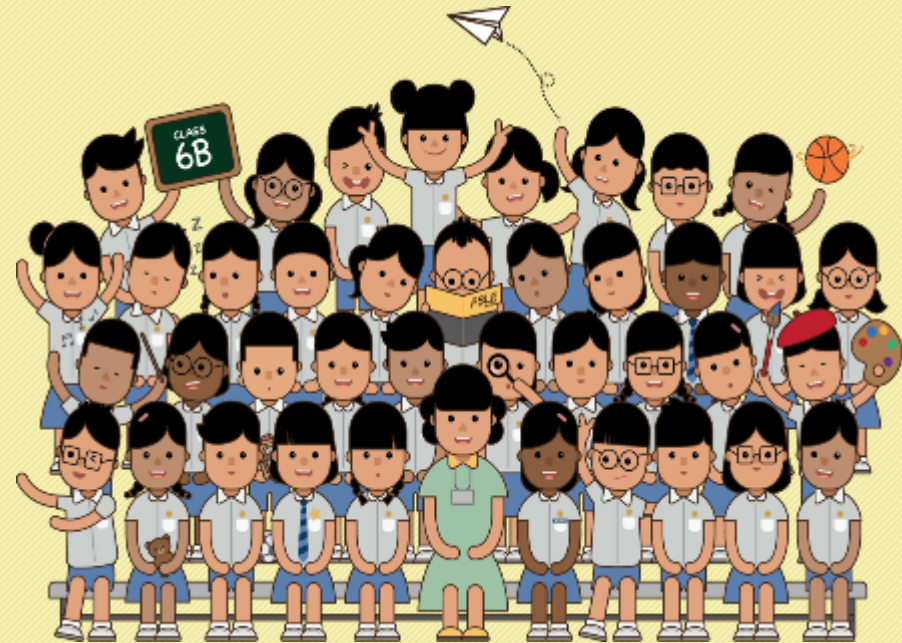
Please Note

- Amendments or withdrawals will NOT be allowed after the end of the School Preference Submission.
- Students successfully allocated to their DSA-Sec schools will NOT be allowed to participate in the annual S1 Posting to opt for secondary schools, and are expected to honour the commitment to the allocated DSA-Sec school for the entire duration of the programme to develop their talents.
- They will also NOT be allowed to transfer to another school after the release of the PSLE results.

CHANGES TO THE PSLE SCORING & S1 POSTING FROM 2021

IT'S PART OF
A BIGGER STORY

PARENTS ENGAGEMENT SESSION



THE PSLE CHANGES ARE PART OF A BIGGER STORY

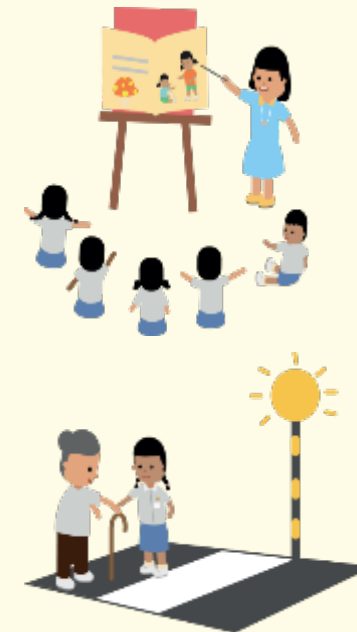
Over the years, we have been fine-tuning the education system to help our students discover and develop their strengths and interests, while moving away from an over-emphasis on academic results.

Our PSLE scoring changes aim to:

- Reduce fine differentiation at a young age
- Recognise students' level of achievement, regardless of how their peers have done

The changes will not affect the curriculum and subjects tested at PSLE

- However, MOE does review the curriculum regularly to ensure that it is relevant and up-to-date. This will continue as per current practice.



IN SUMMARY...

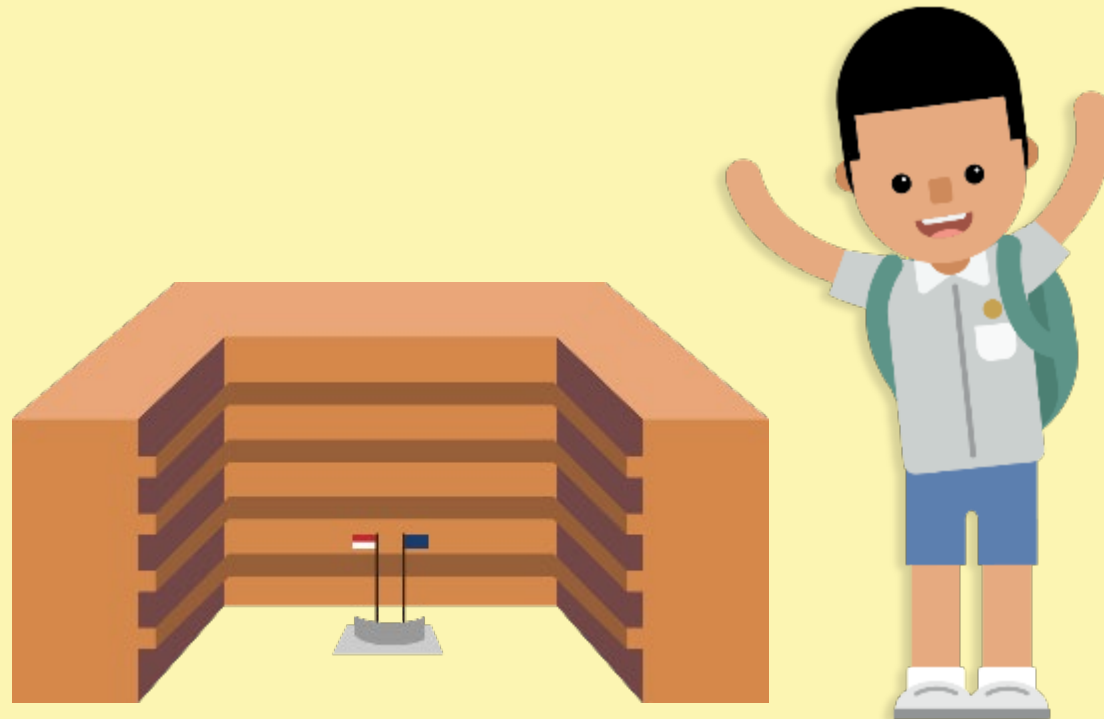
WHAT REMAINS

- Same 4 subjects are tested, and scores are awarded to guide students' choices for the next stage of their education journey
- Curriculum is continually updated. This is not related to the PSLE scoring and S1 posting changes.

WHAT CHANGES

- The T-score Aggregate will be replaced by the PSLE Score, to reduce the fine differentiation of our students at a young age based on exam scores.
- Students will be assessed based on their own achievement, instead of comparing them to their peers.

HOW S1 POSTING WORKS



CHOICE ORDER OF SCHOOLS WILL MATTER MORE

- Students will continue to be posted to a secondary school based on academic merit i.e. overall PSLE score.
- If two or more students with the same PSLE Score vie for the last remaining place in a school, tie-breakers will be used in the following order:

1. CITIZENSHIP

2. CHOICE ORDER OF SCHOOLS (NEW for 2021 PSLE cohort onwards)

3. COMPUTERISED BALLOTING



EXAMPLE:

4 students - Jane, Bryan, Mary and John, are vying for the last places in School A and School B.



JANE'S SCHOOL CHOICES	
1.	School A
2.	...
3.	...
4.	...
5.	...
6.	...



BRYAN'S SCHOOL CHOICES	
1.	School B
2.	School A
3.	...
4.	...
5.	...
6.	...



MARY'S SCHOOL CHOICES	
1.	School A
2.	School B
3.	School C
4.	...
5.	...
6.	...



JOHN'S SCHOOL CHOICES	
1.	School A
2.	School B
3.	School D
4.	...
5.	...
6.	...

Students with better scores will be posted first

Jane will be posted first as she has a better PSLE score, and will be posted to School A.

As Jane has taken that last place in School A, Bryan, Mary and John, having the same PSLE score, will vie for the last available place in School B.

Tie-breaker 1:
Citizenship

Bryan and Mary are Singapore Citizens and will have a priority to enter School B.

John will be tie-broken out as he is a Permanent Resident.
With no places in School B, John will be considered for School D.

Tie-breaker 2:
Choice order of schools

As Bryan ranked School B higher than Mary in his choice order of secondary schools, he will be posted to School B.

Since the last place of School B is taken by Bryan, Mary will be considered for School C.

Tie-breaker 3:
Computerised balloting

FOUNDATION LEVEL SUBJECT GRADES

- For the purpose of S1 posting, Foundation level AL A to AL C will be mapped to AL 6 to AL 8 of Standard level subjects respectively, to derive a student's overall PSLE Score.
- Similar to the current PSLE scoring system, this mapping is based on the learning and assessment load of the subjects, and informs students of their readiness to access the curriculum at the secondary level.

Foundation Level AL Reflected on Result Slip	Foundation Raw Mark Range	Equivalent Standard Subject AL	Standard Raw Mark Range
A	75 – 100	6	45-64
B	30 – 74	7	20-44
C	< 30	8	<20

SCORING OF FOUNDATION SUBJECTS FOR S1 POSTING

- A student's PSLE Score is the sum of the four AL scores across his/her Standard and Foundation subjects.
- Students taking Foundation subjects are eligible for the Express Course, as long as they meet the course placement criteria.
- With Full Subject-based Banding in secondary schools, students may also take subjects at a higher level for those that they are strong in.



ENGLISH	AL3
FOUNDATION MOTHER TONGUE	ALB
FOUNDATION MATHEMATICS	ALB
SCIENCE	AL5

PSLE SCORE: 22

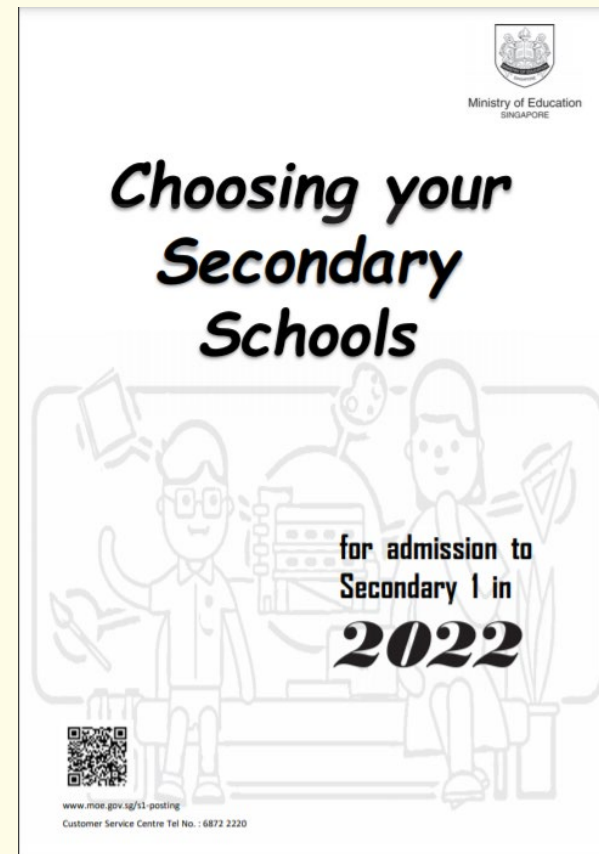
PLACEMENT OUTCOME	PSLE SCORE
EXPRESS	4 – 20
EXPRESS / N(A) option	21 – 22
N(A)	23 – 24
N(A) / N(T) option	25
N(T)	26 – 30, with AL7 or better in both EL <u>and</u> MA

INDICATIVE ACHIEVEMENT LEVEL (AL) CUT-OFF POINT (COP) RANGES FOR DIFFERENT SCHOOL



INDICATIVE ACHIEVEMENT LEVEL (AL) CUT-OFF POINT (COP) RANGES FOR DIFFERENT SCHOOL TYPES

- Information on individual secondary schools' indicative AL COPs will be released in 2023. These AL COPs will be derived from the PSLE Scores and choice patterns of the 2022 S1 Posting Exercise.



CHOOSING A SUITABLE SECONDARY SCHOOL



DISCUSS WITH YOUR CHILD

- Consider your child's learning style, strengths and interests when making school choices in order to find a school that would help the child learn and thrive best.
- Discuss the options with the child, with the following considerations:
 - **Values:** What is the school's culture and ethos?
 - **Learning environment:** Is the school's learning environment right for the child?
 - **Distinctive programmes and CCAs:** Can the school support and develop the child's interests?
 - **Location:** Is it too far from home? How will the child get to school?



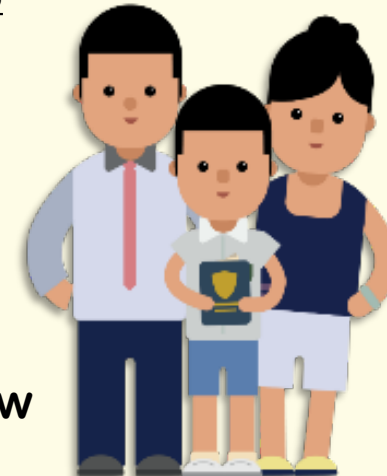
RESOURCES

- MOE SchoolFinder tool - More information on secondary schools can be found here, on school websites and in the Secondary 1 information booklet given to students in Primary 6.

- Open Houses - Secondary schools also hold open houses where you and your child can learn more about the school's programmes, and speak with teachers and students.

- Indicative cut-off points ranges for different school types

- The indicative AL COPs ranges for school types can be used as reference point.
- MOE will be providing indicative AL COPs for secondary schools, based on the data from 2021 S1 posting exercise.
- The actual cut-off points may differ, depending on how students exercise their choices that year.



SUBJECT-BASED BANDING (SECONDARY) ELIGIBILITY CRITERIA UNDER THE AL SCORING SYSTEM



SUBJECT-BASED BANDING (SECONDARY) [SBB (SEC)] ELIGIBILITY CRITERIA UNDER THE AL SCORING SYSTEM


- **Since 2018, MOE has introduced Subject-Based Banding (SBB) in all secondary schools with N(A) and N(T) courses.**
- **SBB (Sec) provides students with greater flexibility to take various subjects at a more demanding level based on their subject-specific strengths and aptitudes.**
- **Under the new PSLE scoring system, students from the Normal course will continue to be eligible to take subjects at a more demanding level at Secondary 1 based on their AL scores for individual subjects, to recognise and develop students' subject-specific strengths.**

SBB (SEC) ELIGIBILITY CRITERIA UNDER THE AL SCORING SYSTEM

- Under the new AL scoring system, the SBB (Sec) eligibility criteria is as follows:

PSLE Standard / Foundation Subject Grade	Option to take subject at
AL 5 or better in a Standard level subject	Express level
AL 6 or better in a Standard level subject <u>OR</u> AL A in a Foundation level subject	N(A) level

SBB (SEC) ELIGIBILITY CRITERIA UNDER THE AL SCORING SYSTEM



ENGLISH LANGUAGE	AL 6
MOTHER TONGUE LANGUAGE	AL 6
MATHEMATICS	AL A
SCIENCE	AL 5
PSLE SCORE: 23	

- A student scores an overall Score of 23 and AL 5 for Science will be placed in the N(A) course. He will be eligible to take Science at a more demanding level (i.e. Express level) at Secondary 1.
- Taking up Science at a more demanding level would allow him to learn at a level more suited to his pace of learning, aptitudes and passions. It could also motivate him to be more meaningfully engaged.
- Eligible students can discuss with their parents and teachers to decide whether to accept the offer.
- As students grow and develop in secondary school, they will continue to have more opportunities to take subjects at more demanding levels based on their in-school performance, to further pursue their interests and develop to their fullest potential.



Primary 6

- Milestone year in Primary School
 - Culmination at PSLE
 - Graduation
- Values to uphold:
 - ***Responsibility***
 - ***Resilience***



Primary 6

- Daily attendance is mandatory
- Homework to be attempted and completed
- Remedial classes
 - Afternoon (Tuesday and Wednesday)
 - June and September holidays(Letter and schedule will be issued nearer to date)
 - Attendance is strongly encouraged



Primary 6

Primary School Leaving Examination:

– Schedule (Tentative)

- ***15 – 16 August*** (Oral papers – EL & MT)
- ***15 September*** (Listening Comprehension: EL & MT)
- ***28 September – 4 October*** (Written Papers)



Parents' Involvement

- Commit some time every weekend to **play games** and **have fun** together.
- **Visit places** or take part in events that **both of you** enjoy.
- **Encourage** your child to make **new friends**.
- **Try out FTGP* Family Time** activities.

- **Encourage** your child when he makes **observations**.
E.g. Say "That's interesting!" and ask why he/she said that.

- **Recognise small successes**. E.g. Say "You've made another new friend in class - well done!"

FAMILIARISE

- **Find out** what primary schools have in store for students these days.
- Do practical things to **ease** your child **into new routines**.
E.g. Plan daily routines together, teach your child new habits like packing his/her bag.

EMPATHISE

- **Teach** your child words that **describe feelings**.
- **Acknowledge** your child's **emotions**.
E.g. "It's okay to feel anxious about starting school."
- **Understand** your child's **needs**. E.g. Start bedtime early. Children need a lot of sleep.





Partnership with Parents

Communications with parents:

- JYPS Bulletin for Parents (School Website)
- Parents Gateway (MOE App)
- Student Diary



- Parent-Teacher Meeting / Briefing
- Class DOJO
- Emails (school/teachers)
- Phone calls (parents can call GO to leave a message for the teachers)

We seek your understanding that teachers will respond to your emails and phone calls between 7.30 am to 5.30 pm on Mon to Fri

THANK YOU



JUNYUAN PRIMARY SCHOOL